

Protocol: adult_other_ADN4-GE_30.1_48CH_20250218

3 Plane Localizer - 3 Plane Localizer	IMAGING PARAMETERS		SCAN TIMING	
	Imaging Mode	2D	Number of Echoes	1
	Pulse Sequence	Gradient Echo	IMAGE ENHANCE	
	Imaging Options	Seq, Fast	Filter Choice	None
	SCAN RANGE		GATING/TRIGGER	
	FOV	26.0	Pause After Navigator Prescan	0
	Slice Thickness	5.00	FMRI	
	Slice Spacing	5.0	PSD Trigger	Internal
	Overlap Locations	0	View Order	Bottom/Up
	ACQ TIMING		# of Repetitions REST	0
	Freq	256	# of Repetitions ACTIVE	0
	Phase	128	SAT	
	Freq DIR	Unswap	Tag Type	None
	NEX	1.00	TRICKS	
	Phase FOV	1.00	Pause On/Off	On
	Auto Shim	Auto	Auto Subtract	0
	Phase Correction	No	Auto SCIC	Off
	RF Drive Mode	Quadrature (CP)		
	Excitation Mode	Selective		
	USER CVS			
	User CV20	1.00		
	User CV Mask2	0		
	MULTI-PHASE			
	Seperate Series	0		
	Mask Phase	0		
Mask Pause	0			
Preserve	0			
DIFFUSION				
Recon All Images	On			
# Synthetic b-values	1			
Synthetic b-value	1000.0;			
CONTRAST				
Contrast Yes/No	No			

Protocol: adult_other_ADN4-GE_30.1_48CH_20250218

Accelerated Sagittal MPRAGE (MSV22) - Accelerated Sagittal MPRAGE (MSV22)	IMAGING PARAMETERS		SCAN TIMING	
	Imaging Mode	3D	Flip Angle	9.0
	Pulse Sequence	MP-RAGE	Number of Echoes	1
	Imaging Options	EDR, Fast, ARC, IrP	TI	900
	Phase	2.00	Receiver Bandwidth	31.25
	Slice	1.00	Recovery Time	800
	SCAN RANGE		IMAGE ENHANCE	
	FOV	25.6	Filter Choice	None
	Slice Thickness	1.00	USER CVS	
	Location per Slab	208	User CV6	1.00
	Overlap Locations	0	User CV30	1.00
	Number of Slices	1	User CV Mask2	16896
	ACQ TIMING		MULTI-PHASE	
	Freq	256	Seperate Series	0
	Phase	256	Trigger Delay without AV	0
	Freq DIR	S/I	Mask Phase	0
	Fat Shift DIR	Normal (S)	Mask Pause	0
	NEX	1.00	Preserve	0
	Phase FOV	0.94	DIFFUSION	
	Auto Shim	On	Recon All Images	On
	Phase Correction	No	Multi b-values	1000.0;
	RF Drive Mode	Preset	Multi NEX Values	1.0;
	Excitation Mode	Selective	# Synthetic b-values	1
	FMRI		Synthetic b-value	1000.0;
	PSD Trigger	Internal	CONTRAST	
View Order	Bottom/Up	Contrast Yes/No	No	
# of Repetitions REST	0			
# of Repetitions ACTIVE	0			
SAT				
Tag Type	None			
TRICKS				
Pause On/Off	On			
Auto Subtract	0			
Auto SCIC	2			
OTHERS				
Protocol Notes	Please do not oblique. Please do not reduce the number of slices. Please do not adjust protocol values.			

Protocol: adult_other_ADN4-GE_30.1_48CH_20250218

HS Sagittal MPRAGE (MSV22) - HS Sagittal MPRAGE (MSV22)	IMAGING PARAMETERS		SCAN TIMING	
	Imaging Mode	3D	Flip Angle	9.0
	Pulse Sequence	MP-RAGE	Number of Echoes	1
	Imaging Options	EDR, Fast, ARC, HS, IrP	TI	900
	Phase	3.00	Receiver Bandwidth	31.25
	Slice	1.00	Recovery Time	800
	HyperSense	1.50	IMAGE ENHANCE	
	SCAN RANGE		Filter Choice	None
	FOV	25.6	USER CVS	
	Slice Thickness	1.00	User CV6	1.00
	Location per Slab	208	User CV30	1.00
	Overlap Locations	0	User CV Mask2	16896
	Number of Slices	1	MULTI-PHASE	
	ACQ TIMING		Seperate Series	0
	Freq	256	Trigger Delay without AV	0
	Phase	256	Mask Phase	0
	Freq DIR	S/I	Mask Pause	0
	Fat Shift DIR	Normal (S)	Preserve	0
	NEX	1.00	DIFFUSION	
	Phase FOV	0.94	Recon All Images	On
	Auto Shim	On	Multi b-values	1000.0;
	Phase Correction	No	Multi NEX Values	1.0;
	RF Drive Mode	Preset	# Synthetic b-values	1
	Excitation Mode	Selective	Synthetic b-value	1000.0;
	FMRI		CONTRAST	
PSD Trigger	Internal	Contrast Yes/No	No	
View Order	Bottom/Up			
# of Repetitions REST	0			
# of Repetitions ACTIVE	0			
SAT				
Tag Type	None			
TRICKS				
Pause On/Off	On			
Auto Subtract	0			
Auto SCIC	2			
OTHERS				
Protocol Notes	Please do not oblique. Please do not reduce the number of slices. Please do not adjust protocol values.			

HS Sagittal MPRAGE (MSV22) - HS Sagittal MPRAGE (MSV22)

Protocol: adult_other_ADN4-GE_30.1_48CH_20250218

Sagittal 3D FLAIR HS 1.4 DL Low (MSV22) - Sagittal 3D FLAIR HS 1.4 DL Low (MSV22)

Sagittal 3D FLAIR HS 1.4 DL Low (MSV22) - Sagittal 3D FLAIR HS 1.4 DL Low (MSV22)

IMAGING PARAMETERS

Imaging Mode	3D
Pulse Sequence	Cube T2 FLAIR
Imaging Options	EDR, Fast, ARC, HS, IrP
Phase	2.00
Slice	2.00
HyperSense	1.40

SCAN RANGE

FOV	25.6
Slice Thickness	1.00
Location per Slab	208
Overlap Locations	0
Number of Slices	1

ACQ TIMING

Freq	256
Phase	256
Freq DIR	S/I
Fat Shift DIR	Normal (S)
NEX	1.00
Phase FOV	1.00
Auto Shim	Auto
Phase Correction	No
RF Drive Mode	Preset
Excitation Mode	Non-Selective

FMRI

PSD Trigger	Internal
View Order	Bottom/Up
# of Repetitions REST	0
# of Repetitions ACTIVE	0

SAT

Tag Type	None
Fat/Water Saturation	Fat

TRICKS

Pause On/Off	On
Auto Subtract	0
Auto SCIC	2

OTHERS

Protocol Notes
 Please do not oblique.
 Please do not reduce the
 number of slices.
 Please do not adjust
 protocol values.

SCAN TIMING

TE	104.0
Number of Echoes	1
TR	5000.0
TI	1534
Echo Train Length	182
Receiver Bandwidth	31.25

IMAGE ENHANCE

Filter Choice	None
---------------	------

USER CVS

User CV5	1.00
User CV11	20.00
User CV32	1.00
User CV34	100.00
User CV Mask2	522

MULTI-PHASE

Seperate Series	0
Mask Phase	0
Mask Pause	0
Preserve	0

DIFFUSION

Recon All Images	On
# Synthetic b-values	1
Synthetic b-value	1000.0;

CONTRAST

Contrast Yes/No	No
-----------------	----

Protocol: adult_other_ADN4-GE_30.1_48CH_20250218

Sagittal 3D FLAIR (MSV22) - Sagittal 3D FLAIR (MSV22)

Sagittal 3D FLAIR (MSV22) - Sagittal 3D FLAIR (MSV22)

IMAGING PARAMETERS

Imaging Mode	3D
Pulse Sequence	Cube T2 FLAIR
Imaging Options	EDR, Fast, ARC, IrP
Phase	2.00
Slice	2.00

SCAN RANGE

FOV	25.6
Slice Thickness	1.00
Location per Slab	208
Overlap Locations	0
Number of Slices	1

ACQ TIMING

Freq	256
Phase	256
Freq DIR	S/I
Fat Shift DIR	Normal (S)
NEX	1.00
Phase FOV	1.00
Auto Shim	Auto
Phase Correction	No
RF Drive Mode	Preset
Excitation Mode	Non-Selective

FMRI

PSD Trigger	Internal
View Order	Bottom/Up
# of Repetitions REST	0
# of Repetitions ACTIVE	0

SAT

Tag Type	None
Fat/Water Saturation	Fat

TRICKS

Pause On/Off	On
Auto Subtract	0
Auto SCIC	2

OTHERS

Protocol Notes *Please do not oblique.
Please do not reduce the
number of slices.
Please do not adjust
protocol values.*

SCAN TIMING

TE	104.0
Number of Echoes	1
TR	5000.0
TI	1532
Echo Train Length	182
Receiver Bandwidth	31.25

IMAGE ENHANCE

Filter Choice	None
---------------	------

USER CVS

User CV5	1.00
User CV11	20.00
User CV30	1.00
User CV32	1.00
User CV34	100.00
User CV Mask2	522

MULTI-PHASE

Seperate Series	0
Mask Phase	0
Mask Pause	0
Preserve	0

DIFFUSION

Recon All Images	On
Multi b-values	1000.0;
Multi NEX Values	1.0;
# Synthetic b-values	1
Synthetic b-value	1000.0;

CONTRAST

Contrast Yes/No	No
-----------------	----

Protocol: adult_other_ADN4-GE_30.1_48CH_20250218

IMAGING PARAMETERS

Imaging Mode	3D
Pulse Sequence	SWAN
Imaging Options	FC, EDR, Fast, ARC
Phase	2.00
Slice	1.00

SCAN RANGE

FOV	20.0
Slice Thickness	1.80
Location per Slab	88
Overlap Locations	0
Number of Slices	1

ACQ TIMING

Freq	384
Phase	268
Freq DIR	A/P
Phase FOV	1.00
Auto Shim	Auto
Phase Correction	No
RF Drive Mode	Preset
Excitation Mode	Selective

FMRI

PSD Trigger	Internal
View Order	Bottom/Up
# of Repetitions REST	0
# of Repetitions ACTIVE	0

SAT

Tag Type	None
----------	------

TRICKS

Pause On/Off	On
Auto Subtract	0
Auto SCIC	3

SCAN TIMING

Flip Angle	15.0
TE	14.8
Number of Echoes	5
TR	Minimum
Receiver Bandwidth	100.00

IMAGE ENHANCE

Filter Choice	None
---------------	------

USER CVS

User CV16	6.00
User CV26	1.00
User CV34	100.00
User CV Mask2	1032

MULTI-PHASE

Seperate Series	0
Mask Phase	0
Mask Pause	0
Preserve	0

DIFFUSION

Recon All Images	On
# Synthetic b-values	1
Synthetic b-value	1000.0;

CONTRAST

Contrast Yes/No	No
-----------------	----

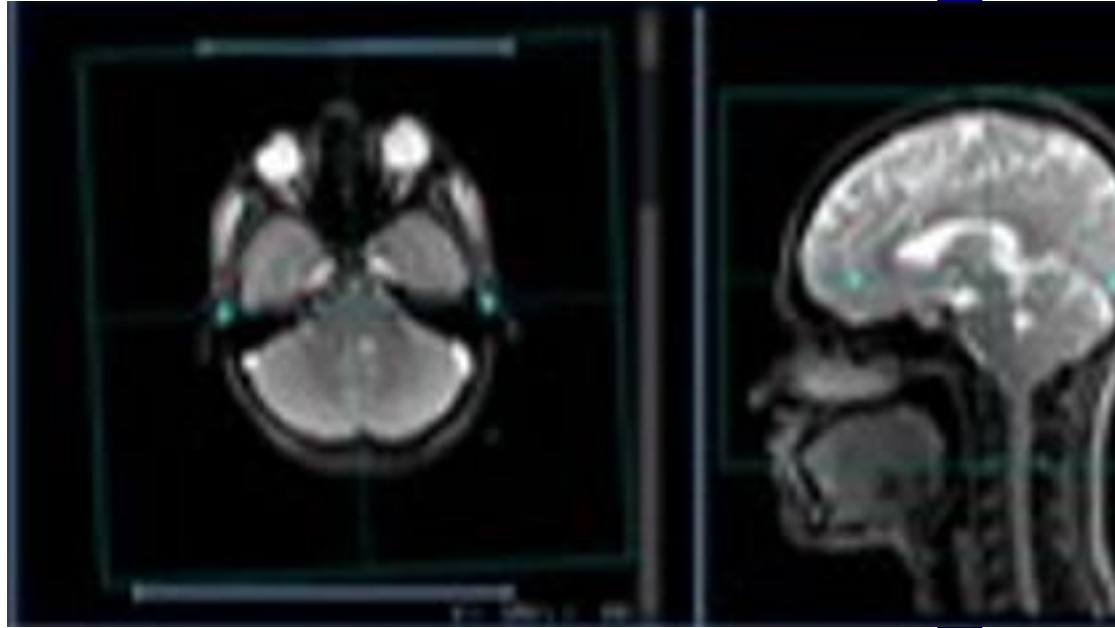
Axial 3D ME T2 GRE (MSV24) - Axial 3D ME T2 GRE (MSV24)

Axial 3D ME T2 GRE (MSV24) - Axial 3D ME T2 GRE (MSV24)

OTHERS

Protocol Notes

*General Considerations:
-3D imaging can improve
the slice plane resolution
compared to 2D imaging
-Prescribe the slices as
shown*



Protocol: adult_other_ADN4-GE_30.1_48CH_20250218

Axial T2 Star (MSV21) - Axial T2 Star (MSV21)	IMAGING PARAMETERS		SCAN TIMING	
	Imaging Mode	2D	Flip Angle	20.0
	Pulse Sequence	Gradient Echo	TE	20.0
	Imaging Options	FC, EDR	Number of Echoes	1
	SCAN RANGE		TR	650.0
	FOV	22.0	Receiver Bandwidth	25.00
	Slice Thickness	4.00	IMAGE ENHANCE	
	Slice Spacing	0.0	Filter Choice	None
	Overlap Locations	0	GATING/TRIGGER	
	Number of Slices	50	Pause After Navigator Prescan	0
	ACQ TIMING		FMRI	
	Freq	256	PSD Trigger	Internal
	Phase	192	View Order	Bottom/Up
	Freq DIR	A/P	# of Repetitions REST	0
	NEX	1.00	# of Repetitions ACTIVE	0
	# of Acq. Before Pause	0	SAT	
	Phase FOV	1.00	Tag Type	None
	Auto Shim	Auto	TRICKS	
	Phase Correction	No	Pause On/Off	On
	RF Drive Mode	Preset	Auto Subtract	0
	Excitation Mode	Selective	Auto SCIC	2
	USER CVS		OTHERS	
	User CV Mask2	0	Protocol Notes	Please do not oblique. Please do not reduce the number of slices. Please do not adjust protocol values.
	MULTI-PHASE			
	Seperate Series	0		
Mask Phase	0			
Mask Pause	0			
Preserve	0			
DIFFUSION				
Recon All Images	On			
Multi b-values	1000.0;			
Multi NEX Values	1.0;			
# Synthetic b-values	1			
Synthetic b-value	1000.0;			
CONTRAST				
Contrast Yes/No	No			

Axial T2 Star (MSV21) - Axial T2 Star (MSV21)

Protocol: adult_other_ADN4-GE_30.1_48CH_20250218

IMAGING PARAMETERS		SCAN TIMING	
Imaging Mode	3D	TE	Maximum
Pulse Sequence	Cube	Number of Echoes	1
Imaging Options	EDR, Fast, FR, ARC, HS	TR	2500.0
Phase	2.00	Echo Train Length	100
Slice	2.00	Receiver Bandwidth	62.50
HyperSense	1.40		
SCAN RANGE		IMAGE ENHANCE	
FOV	25.6	Filter Choice	None
Slice Thickness	1.00	USER CVS	
Location per Slab	208	User CV29	1.00
Overlap Locations	0	User CV32	1.00
Number of Slices	1	User CV34	100.00
		User CV Mask2	522
ACQ TIMING		MULTI-PHASE	
Freq	256	Seperate Series	0
Phase	256	Mask Phase	0
Freq DIR	S/I	Mask Pause	0
Fat Shift DIR	Normal (S)	Preserve	0
NEX	1.00	DIFFUSION	
Phase FOV	1.00	Recon All Images	On
Auto Shim	Auto	# Synthetic b-values	1
Phase Correction	No	Synthetic b-value	1000.0;
RF Drive Mode	Preset	CONTRAST	
Excitation Mode	Non-Selective	Contrast Yes/No	No
FMRI			
PSD Trigger	Internal		
View Order	Bottom/Up		
# of Repetitions REST	0		
# of Repetitions ACTIVE	0		
SAT			
Tag Type	None		
TRICKS			
Pause On/Off	On		
Auto Subtract	0		
Auto SCIC	2		

Sagittal 3D T2 Cube HS 1.4 DL Low (MSV21) - Sagittal 3D T2 Cube HS 1.4 DL Low (MSV21)

Sagittal 3D T2 Cube HS 1.4 DL Low (MSV21) - Sagittal 3D T2 Cube HS 1.4 DL Low (MSV21)

Protocol: adult_other_ADN4-GE_30.1_48CH_20250218

Axial 3D pCASL 1025 (Eyes Open) (MSV21) - Axial 3D pCASL 1025 (Eyes Open) (MSV21)	IMAGING PARAMETERS		SCAN TIMING	
	Imaging Mode	3D	Number of Echoes	1
	Pulse Sequence	3DASL	Receiver Bandwidth	62.50
	Imaging Options	EDR, Fast, Spiral	Post Label Delay	1025.0
	SCAN RANGE		IMAGE ENHANCE	
	FOV	24.0	Filter Choice	None
	Slice Thickness	4.00	GATING/TRIGGER	
	Overlap Locations	0	Pause After Navigator	0
	Number of Slices	1	Prescan	
	ACQ TIMING		FMRI	
	Freq	768	PSD Trigger	Internal
	Phase	6	View Order	Bottom/Up
	Freq DIR	R/L	# of Repetitions REST	0
	NEX	1.00	# of Repetitions ACTIVE	0
	Auto Shim	Auto	SAT	
	Phase Correction	No	Tag Type	None
	RF Drive Mode	Preset	TRICKS	
	Excitation Mode	Selective	Pause On/Off	On
	USER CVS		Auto Subtract	0
	User CV4	1.00	Auto SCIC	Off
User CV5	1800.00	OTHERS		
User CV Mask2	0	Protocol Notes	Tips: -When prescribing the 3D slab, the bottom of the slab should be positioned at the bottom of the cerebellum	
MULTI-PHASE				
Seperate Series	0			
Delay after Acquisition without AV	0			
Mask Phase	0			
Mask Pause	0			
Preserve	0			
DIFFUSION				
Recon All Images	On			
Multi b-values	1000.0;			
Multi NEX Values	1.0;			
# Synthetic b-values	1			
Synthetic b-value	1000.0;			
CONTRAST				
Contrast Yes/No	No			

Protocol: adult_other_ADN4-GE_30.1_48CH_20250218

Axial 3D pCASL 1525 (Eyes Open) (MSV21) - Axial 3D pCASL 1525 (Eyes Open) (MSV21)

Axial 3D pCASL 1525 (Eyes Open) (MSV21) - Axial 3D pCASL 1525 (Eyes Open) (MSV21)

IMAGING PARAMETERS

Imaging Mode	3D
Pulse Sequence	3DASL
Imaging Options	EDR, Fast, Spiral

SCAN RANGE

FOV	24.0
Slice Thickness	4.00
Overlap Locations	0
Number of Slices	1

ACQ TIMING

Freq	768
Phase	6
Freq DIR	R/L
NEX	1.00
Auto Shim	Auto
Phase Correction	No
RF Drive Mode	Preset
Excitation Mode	Selective

USER CVS

User CV4	1.00
User CV5	1800.00
User CV Mask2	0

MULTI-PHASE

Seperate Series	0
Delay after Acquisition without AV	0
Mask Phase	0
Mask Pause	0
Preserve	0

DIFFUSION

Recon All Images	On
# Synthetic b-values	1
Synthetic b-value	1000.0;

CONTRAST

Contrast Yes/No	No
-----------------	----

SCAN TIMING

Number of Echoes	1
Receiver Bandwidth	62.50
Post Label Delay	1525.0

IMAGE ENHANCE

Filter Choice	None
---------------	------

GATING/TRIGGER

Pause After Navigator Prescan	0
-------------------------------	---

FMRI

PSD Trigger	Internal
View Order	Bottom/Up
# of Repetitions REST	0
# of Repetitions ACTIVE	0

SAT

Tag Type	None
----------	------

TRICKS

Pause On/Off	On
Auto Subtract	0
Auto SCIC	Off

OTHERS

Protocol Notes	Tips: -When prescribing the 3D slab, the bottom of the slab should be positioned at the bottom of the cerebellum
----------------	---

Protocol: adult_other_ADN4-GE_30.1_48CH_20250218

Axial 3D pCASL 2025 (Eyes Open) (MSV21) - Axial 3D pCASL 2025 (Eyes Open) (MSV21)

Axial 3D pCASL 2025 (Eyes Open) (MSV21) - Axial 3D pCASL 2025 (Eyes Open) (MSV21)

IMAGING PARAMETERS

Imaging Mode	3D
Pulse Sequence	3DASL
Imaging Options	EDR, Fast, Spiral

SCAN RANGE

FOV	24.0
Slice Thickness	4.00
Overlap Locations	0
Number of Slices	1

ACQ TIMING

Freq	768
Phase	6
Freq DIR	R/L
NEX	1.00
Auto Shim	Auto
Phase Correction	No
RF Drive Mode	Preset
Excitation Mode	Selective

USER CVS

User CV4	1.00
User CV5	1800.00
User CV Mask2	0

MULTI-PHASE

Seperate Series	0
Delay after Acquisition without AV	0
Mask Phase	0
Mask Pause	0
Preserve	0

DIFFUSION

Recon All Images	On
# Synthetic b-values	1
Synthetic b-value	1000.0;

CONTRAST

Contrast Yes/No	No
-----------------	----

SCAN TIMING

Number of Echoes	1
Receiver Bandwidth	62.50
Post Label Delay	2025.0

IMAGE ENHANCE

Filter Choice	None
---------------	------

GATING/TRIGGER

Pause After Navigator Prescan	0
-------------------------------	---

FMRI

PSD Trigger	Internal
View Order	Bottom/Up
# of Repetitions REST	0
# of Repetitions ACTIVE	0

SAT

Tag Type	None
----------	------

TRICKS

Pause On/Off	On
Auto Subtract	0
Auto SCIC	Off

OTHERS

Protocol Notes	Tips: -When prescribing the 3D slab, the bottom of the slab should be positioned at the bottom of the cerebellum
----------------	---

Protocol: adult_other_ADN4-GE_30.1_48CH_20250218

Axial 3D pCASL 2525 (Eyes Open) (MSV21) - Axial 3D pCASL 2525 (Eyes Open) (MSV21)

Axial 3D pCASL 2525 (Eyes Open) (MSV21) - Axial 3D pCASL 2525 (Eyes Open) (MSV21)

IMAGING PARAMETERS

Imaging Mode	3D
Pulse Sequence	3DASL
Imaging Options	EDR, Fast, Spiral

SCAN RANGE

FOV	24.0
Slice Thickness	4.00
Overlap Locations	0
Number of Slices	1

ACQ TIMING

Freq	768
Phase	6
Freq DIR	R/L
NEX	1.00
Auto Shim	Auto
Phase Correction	No
RF Drive Mode	Preset
Excitation Mode	Selective

USER CVS

User CV4	1.00
User CV5	1800.00
User CV Mask2	0

MULTI-PHASE

Seperate Series	0
Delay after Acquisition without AV	0
Mask Phase	0
Mask Pause	0
Preserve	0

DIFFUSION

Recon All Images	On
# Synthetic b-values	1
Synthetic b-value	1000.0;

CONTRAST

Contrast Yes/No	No
-----------------	----

SCAN TIMING

Number of Echoes	1
Receiver Bandwidth	62.50
Post Label Delay	2525.0

IMAGE ENHANCE

Filter Choice	None
---------------	------

GATING/TRIGGER

Pause After Navigator Prescan	0
-------------------------------	---

FMRI

PSD Trigger	Internal
View Order	Bottom/Up
# of Repetitions REST	0
# of Repetitions ACTIVE	0

SAT

Tag Type	None
----------	------

TRICKS

Pause On/Off	On
Auto Subtract	0
Auto SCIC	Off

OTHERS

Protocol Notes	Tips: -When prescribing the 3D slab, the bottom of the slab should be positioned at the bottom of the cerebellum
----------------	---

Protocol: adult_other_ADN4-GE_30.1_48CH_20250218

Axial 3D pCASL 3025 (Eyes Open) (MSV21) - Axial 3D pCASL 3025 (Eyes Open) (MSV21)

Axial 3D pCASL 3025 (Eyes Open) (MSV21) - Axial 3D pCASL 3025 (Eyes Open) (MSV21)

IMAGING PARAMETERS

Imaging Mode	3D
Pulse Sequence	3DASL
Imaging Options	EDR, Fast, Spiral

SCAN RANGE

FOV	24.0
Slice Thickness	4.00
Overlap Locations	0
Number of Slices	1

ACQ TIMING

Freq	768
Phase	6
Freq DIR	R/L
NEX	1.00
Auto Shim	Auto
Phase Correction	No
RF Drive Mode	Preset
Excitation Mode	Selective

USER CVS

User CV4	1.00
User CV5	1800.00
User CV Mask2	0

MULTI-PHASE

Seperate Series	0
Delay after Acquisition without AV	0
Mask Phase	0
Mask Pause	0
Preserve	0

DIFFUSION

Recon All Images	On
# Synthetic b-values	1
Synthetic b-value	1000.0;

CONTRAST

Contrast Yes/No	No
-----------------	----

SCAN TIMING

Number of Echoes	1
Receiver Bandwidth	62.50
Post Label Delay	3025.0

IMAGE ENHANCE

Filter Choice	None
---------------	------

GATING/TRIGGER

Pause After Navigator Prescan	0
-------------------------------	---

FMRI

PSD Trigger	Internal
View Order	Bottom/Up
# of Repetitions REST	0
# of Repetitions ACTIVE	0

SAT

Tag Type	None
----------	------

TRICKS

Pause On/Off	On
Auto Subtract	0
Auto SCIC	Off

OTHERS

Protocol Notes	Tips: -When prescribing the 3D slab, the bottom of the slab should be positioned at the bottom of the cerebellum
----------------	---

Protocol: adult_other_ADN4-GE_30.1_48CH_20250218

IMAGING PARAMETERS

Imaging Mode	2D
Pulse Sequence	Spin Echo
Imaging Options	EDR, Cla, EPI, DIFF, ARC, HB
Phase	2.00
HyperBand Slice	3

SCAN RANGE

FOV	23.2
Slice Thickness	2.00
Slice Spacing	0.0
Overlap Locations	0
Number of Slices	81

ACQ TIMING

Freq	116
Phase	116
Freq DIR	R/L
Phase FOV	1.00
Auto Shim	Auto
Phase Correction	Yes
RF Drive Mode	Preset
Excitation Mode	Selective

FMRI

PSD Trigger	Internal
View Order	Bottom/Up
# of Repetitions REST	0
# of Repetitions ACTIVE	0

SAT

Tag Type	None
Fat/Water Saturation	Fat

TRICKS

Pause On/Off	On
Auto Subtract	0
Auto SCIC	2

OTHERS

Protocol Notes *VERY IMPORTANT:
Set Acceleration->Hyperband Slice to 3!
(It is saved as 3 in the protocol, but a bug resets it to 2.)
Reset Slices to 81.
Auto TR -> Auto and recalculate. It should go to about 3306.
Make sure both the anterior and posterior receiver channels are on with the 48 channel coil, and that Freq. Dir is R/L.
Please do not oblique.
Please do not reduce the number of slices.
Please do not adjust protocol values.*

SCAN TIMING

TE	Minimum
Number of Echoes	1
TR	3124.0
Number of Shots	1

IMAGE ENHANCE

Filter Choice	None
---------------	------

USER CVS

User CV5	1.00
User CV11	1127.00
TR Min	2000.0
TR Max	17000.0
User CV Mask2	512

MULTI-PHASE

Seperate Series	0
Mask Phase	0
Mask Pause	0
Preserve	0

DIFFUSION

Optimized TE	No
Diffusion Directions	Tensor
Number of Diffusion Directions	126
Number of T2 Images	1
Dual Spin Echo	Off
Diffusion Tensor Processing Output	No Selection
Recon All Images	Off
Multi b-values	2000.0;
Multi NEX Values	1.0;
Real Time Field Adjustment	1

CONTRAST

Contrast Yes/No	No
-----------------	----

Axial HB dMRI (MS21) - Axial HB dMRI (MS21)

Axial HB dMRI (MS21) - Axial HB dMRI (MS21)

Protocol: adult_other_ADN4-GE_30.1_48CH_20250218

IMAGING PARAMETERS	
Imaging Mode	2D
Pulse Sequence	FSE-XL
Imaging Options	Fast, Asset
Phase	2.00
SCAN RANGE	
FOV	17.5
Slice Thickness	2.00
Slice Spacing	Intleave
Overlap Locations	0
Number of Slices	30
ACQ TIMING	
Freq	448
Phase	448
Freq DIR	S/I
Fat Shift DIR	Normal (I)
NEX	1.00
# of Acq. Before Pause	0
Phase FOV	1.00
Auto Shim	Auto
Phase Correction	No
RF Drive Mode	Preset
Excitation Mode	Selective
FMRI	
PSD Trigger	Internal
View Order	Bottom/Up
# of Repetitions REST	0
# of Repetitions ACTIVE	0
SAT	
Tag Type	None
TRICKS	
Pause On/Off	On
Auto Subtract	0
Auto SCIC	2
OTHERS	
Protocol Notes	Angle the slices perpendicular to the hippocampul body. Please refer to the study manual for further details.
SCAN TIMING	
Flip Angle	122.0
TE	50.0
Number of Echoes	1
TR	8020.0
Echo Train Length	15
Receiver Bandwidth	20.83
IMAGE ENHANCE	
Filter Choice	None
USER CVS	
User CV26	1.00
User CV29	1.00
User CV30	1.00
User CV Mask2	512
MULTI-PHASE	
Seperate Series	0
Mask Phase	0
Mask Pause	0
Preserve	0
DIFFUSION	
Recon All Images	On
Multi b-values	1000.0;
Multi NEX Values	1.0;
# Synthetic b-values	1
Synthetic b-value	1000.0;
CONTRAST	
Contrast Yes/No	No

HighResHippo (MSV21) - HighResHippo (MSV21)

HighResHippo (MSV21) - HighResHippo (MSV21)